



DIGITAL MEDIA

– Broadcast Saas –

LG webOS 6.0 CONFIGURATION



www.weezago.com

LG webOS 6.0 CONFIGURATION

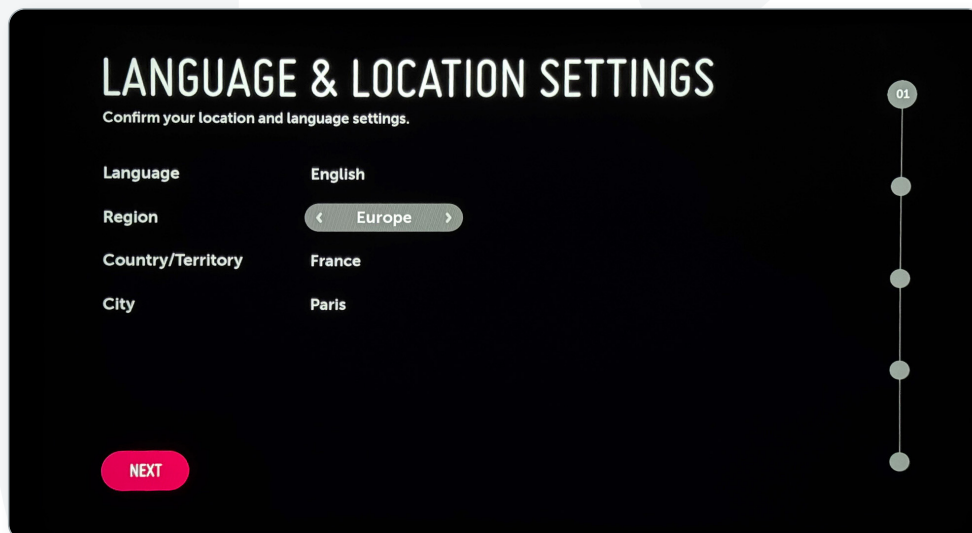
Requirements

- ➡ To configure your screen, you will use the LG webOS 6.0 control panel and you will need the following items:
- The remote control
 - A connected USB keyboard (optional)
 - A wired or wireless Internet connection
 - A platform compatible with webOS Signage 6.0 and above

IMPORTANT: If the screen is not new, a factory reset is necessary to avoid any conflicts. **Settings / Administration / Reset to factory settings**

General settings

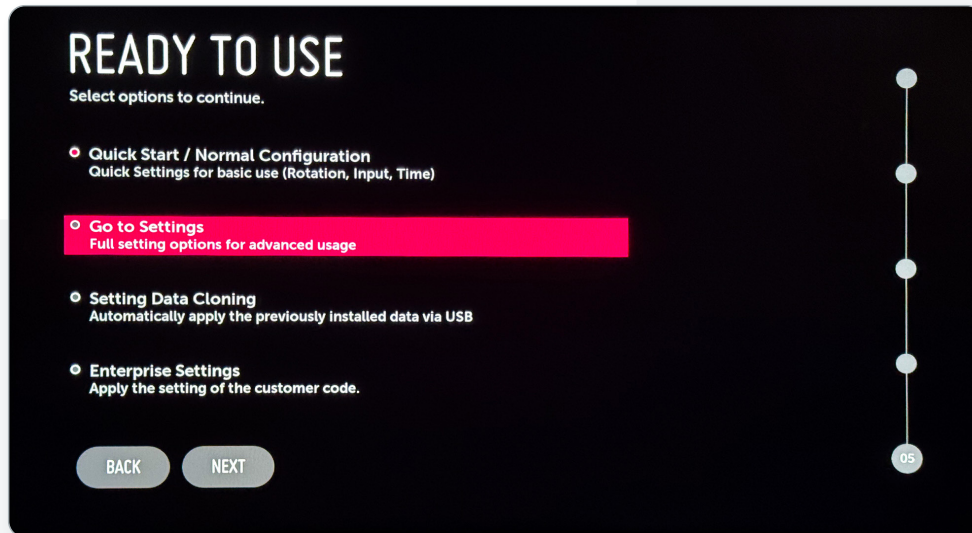
- ➡ Then follow the procedure below:
- Switch on your LG webOS 6.0 screen, configure the language, region, time zone and network settings (Wi-Fi or Ethernet), accept the LG terms of use and confirm.



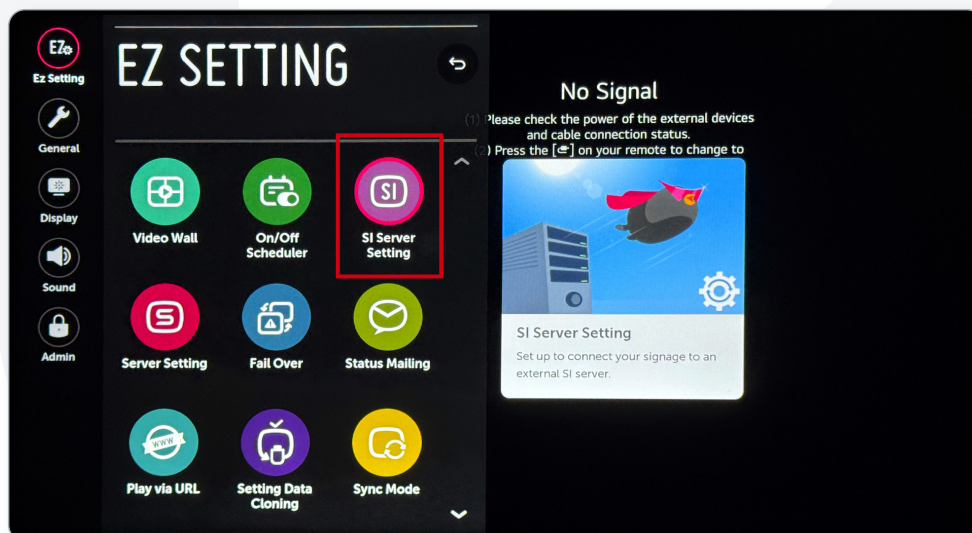
LG webOS 6.0 CONFIGURATION

Advanced settings

- Select « **quick start** » or go directly to advanced settings.
- Complete the procedure until the desktop appears, then press the « **settings** » button on the remote control.



- In the left-hand menu, select the first submenu, « **EZ SETTING** », then « **SI Server Setting** ».



LG webOS 6.0 CONFIGURATION

Advanced settings

➡ Enter the information below:

- **Full Qualified Domain Name:**
 - On
 - <https://webos.weezago.com/app.ipk>
- **Secure connection:** https://
- **SI Server IP:** 0 0 0 0
- **Port Number:** 0
- **Application Launch Mode:** Local
- **Application Type:** IPK
- **Local Application Upgrade:** REMOTE

The screenshot shows the 'SI SERVER SETTING' screen with a dark theme. At the top left is a back arrow and '< 01', and at the top right is a close button 'X'. A 'RESET' button is in the top right corner. The settings are as follows:

- Fully Qualified Domain Name:** A toggle switch is set to 'On' (red). Below it is a text field containing 'https://webos.weeza...'. A chevron icon is on the right.
- Secure Connection:** Two radio buttons are present: 'http://' (unselected) and 'https://' (selected, red).
- SI Server IP:** Four circular buttons, each containing the digit '0'.
- Port Number:** A text field containing the digit '0'.
- Application Launch Mode:** Four radio buttons: 'None' (unselected), 'Local' (selected, red), 'Remote' (unselected), and 'USB' (unselected).
- Storage Device:** A dropdown menu with a chevron icon, showing 'No Device'.
- Application Type:** Two radio buttons: 'ZIP' (unselected) and 'IPK' (selected, red). A chevron icon is on the right.

This screenshot is identical to the one above, but with an additional setting at the bottom:

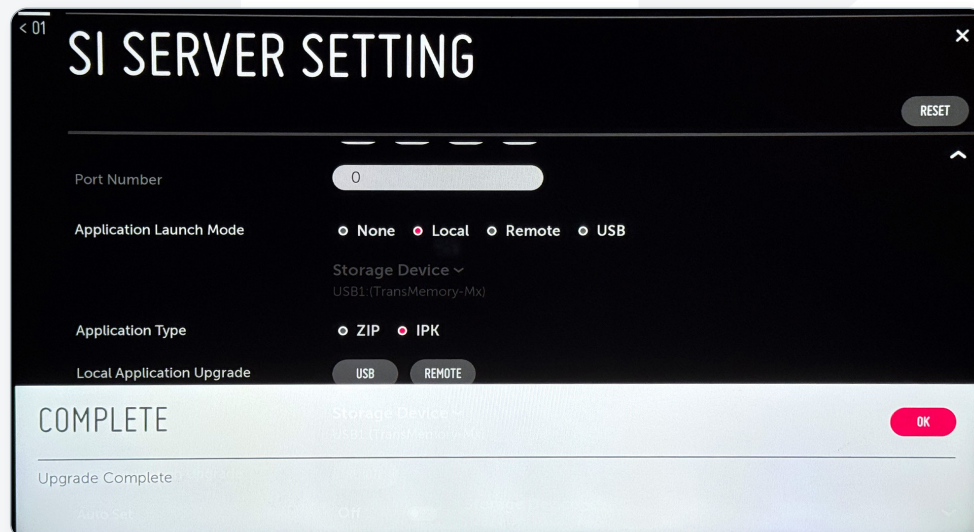
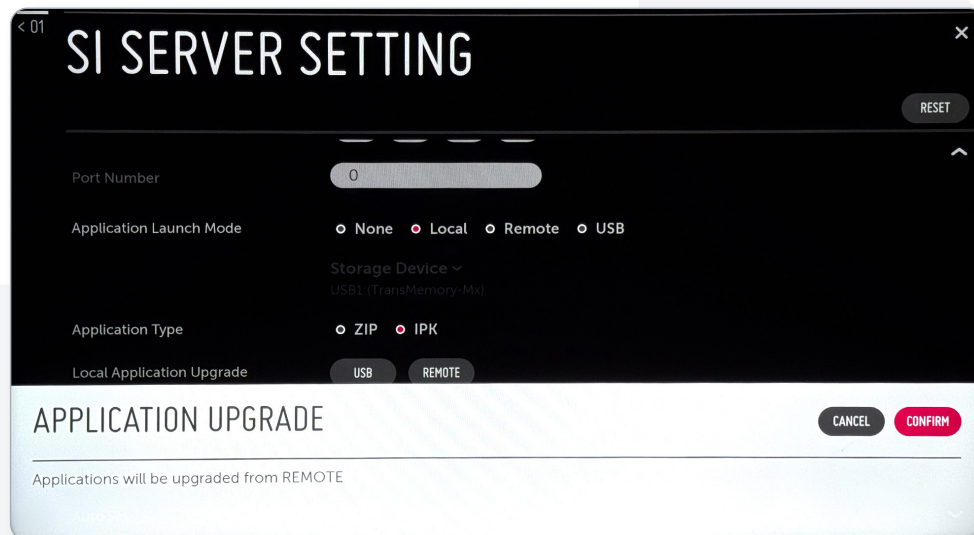
- Local Application Upgrade:** Two buttons: 'USB' (unselected, grey) and 'REMOTE' (selected, red).



LG webOS 6.0 CONFIGURATION

Advanced settings

- Once the last setting has been confirmed, the Weezago application will install itself. Confirm until you see the message « **COMPLETE** ».



- After the « **COMPLETE** », confirm by pressing the « **OK** » button, then switch the screen off and on again.



LG webOS 6.0 CONFIGURATION

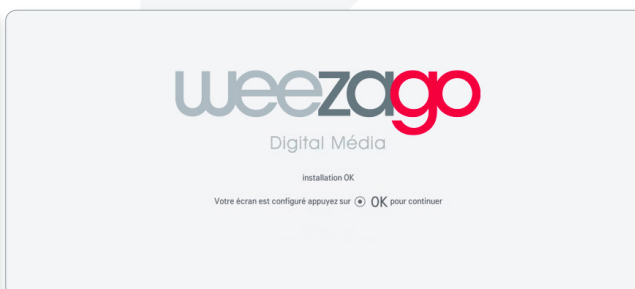
Restart

➡ On restart, the **installation will launch automatically.**



➡ **Follow the instructions:**

- Choose between the orientations **0° / 90° / 270° / 180°** using the right or left arrows on the remote control
- Enter the **Licence Code**



- Once finished, press « **OK** ».

➡ If the screen does not restart on its own, a message will appear asking you to switch it off and on again manually.

Congratulations, the installation is complete!

➡ **To change the orientation of a screen on which the Weezago application is installed:**

When the Weezago start-up screen appears, press « 0 » on the remote control. Choose between the **orientations 0° / 90° / 270° / 180°** using the right or left arrows on the remote control.

- Select the new orientation by pressing 'OK' twice.
- **The screen will restart automatically.**

